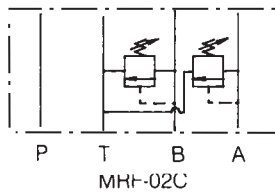
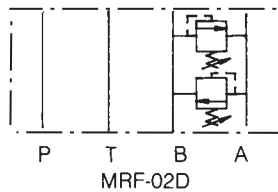
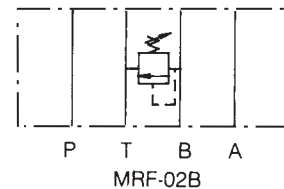
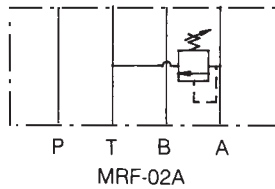
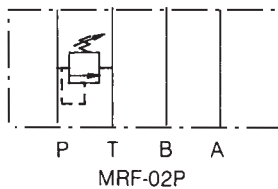




## FEATURES

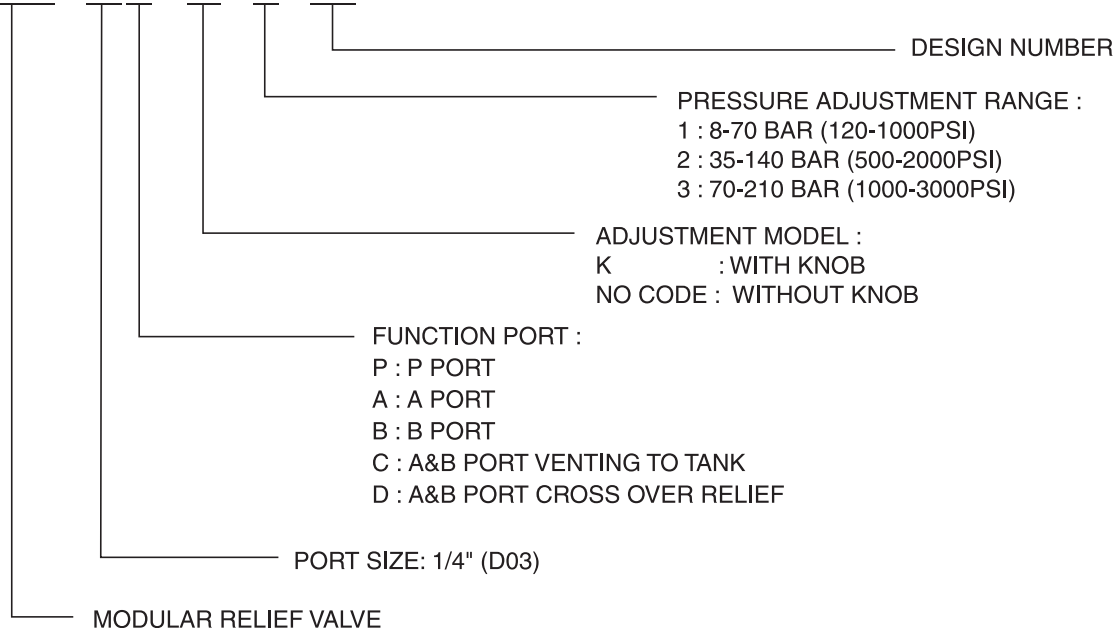
Max. operating pressure	207 BAR (3000 PSI)
Max. flow capacity	35 LPM (9.3 GPM)

## SYMBOLS



## HOW TO ORDER

**MRF- 02P- K - 1 - 40**



# MRF-02 SERIES

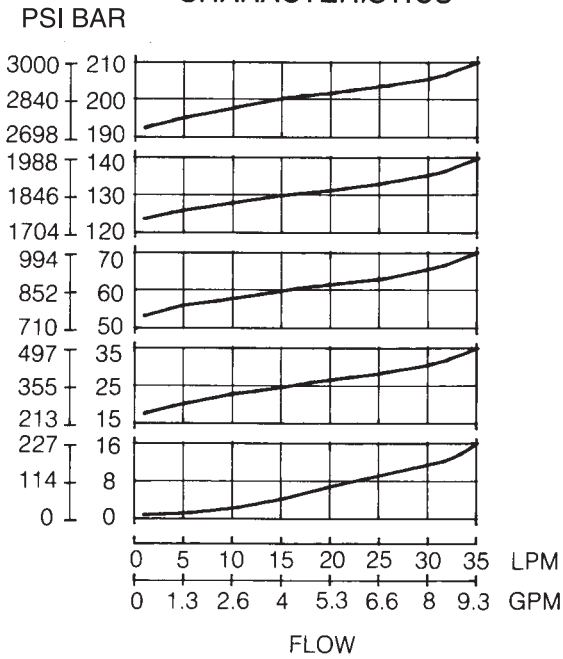
## PERFORMANCE CURVES

### TEST CONDITIONS

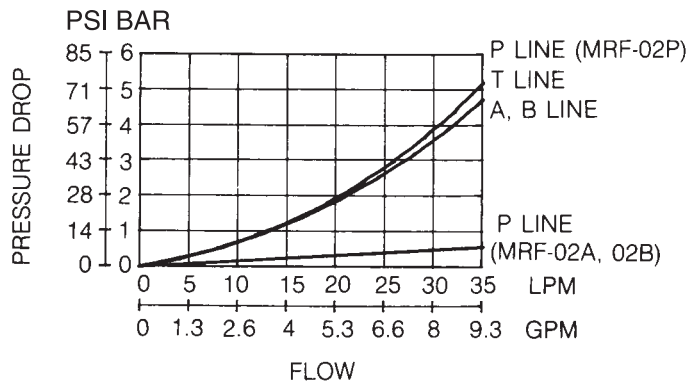
Viscosity: 35 cSt (175 SSU)

Temperature: 50°C (122° F)

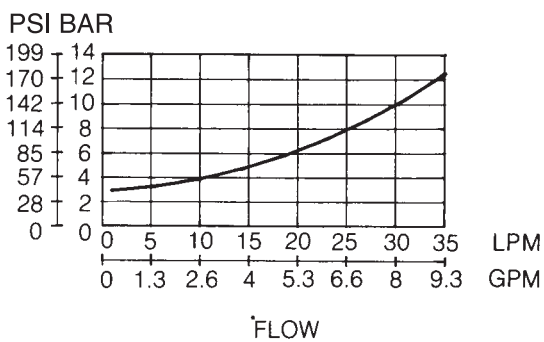
### NOMINAL OVERRIDE CHARACTERISTICS



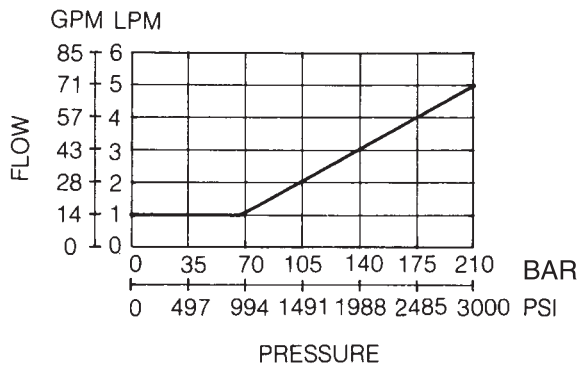
### PRESSURE DROP



### MIN. ADJUSTMENT PRESSURE



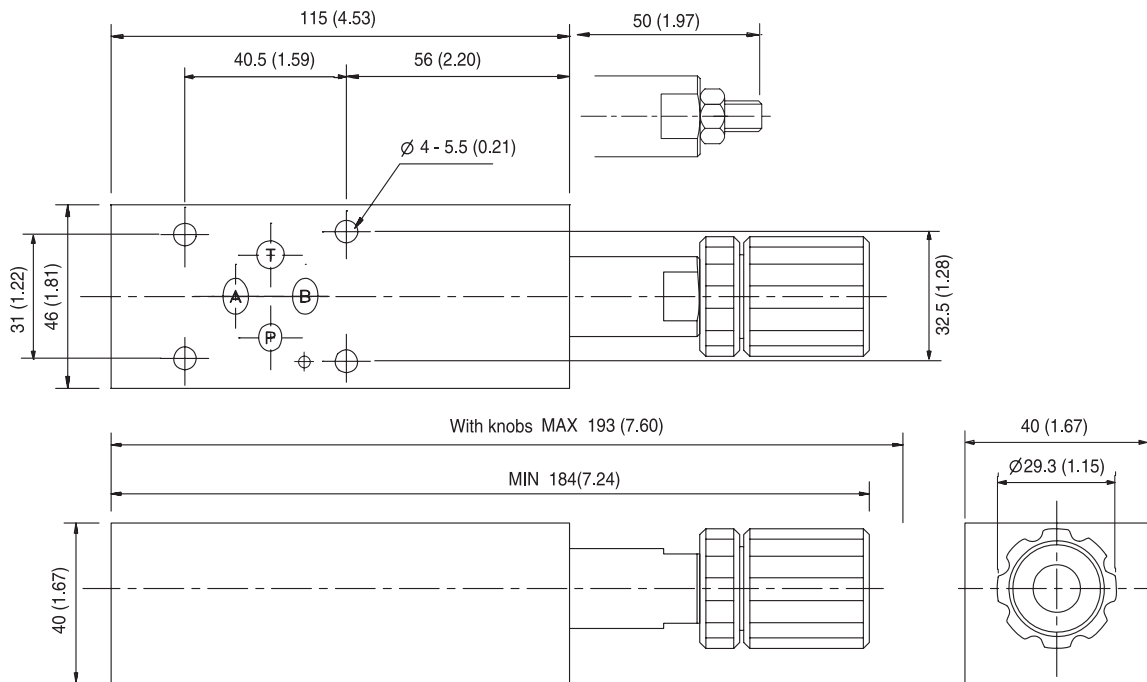
### MIN. FLOW CHARACTERISTICS



# INSTALLATION DIMENSIONS

UNIT: mm(inch)  
 WEIGHT: 1.5 kgs(3.3 lbs)  
 Mounting Surface: ISO 4401-AB-03-4-A

MRF - A/B/P - ※ - ※ - 40



# MRF-02 SERIES

UNIT: mm(inch)

WEIGHT: 1.7 kgs(3.75 lbs)

Mounting Surface: ISO 4401-AB-03-4-A

## INSTALLATION DIMENSIONS

