

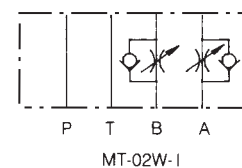
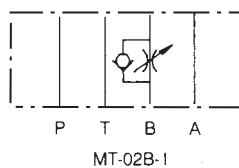
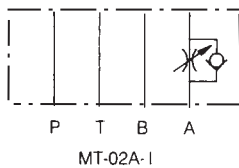
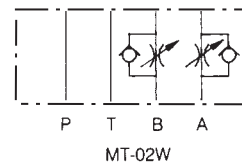
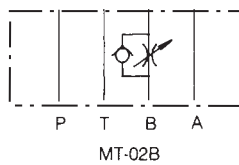
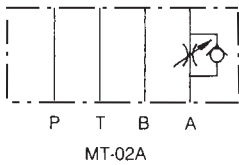
MODULAR THROTTLE AND CHECK VALVE MT-02 SERIES



SPECIFICATIONS

Max. operating pressure	207 BAR (3000 PSI)
Max. flow capacity	35 LPM (9.3 GPM)

SYMBOLS



HOW TO ORDER

MT - 02W - K - I - 40

DESIGN NUMBER

CONTROLLED MODEL:
I : METER IN
NO CODE : METER OUT

ADJUSTMENT MODEL :
K : WITH KNOB
NO CODE : WITHOUT KNOB

FUNCTION PORT :
A : A PORT
B : B PORT
W : A&B PORT

PORT SIZE: 1/4" (D03)

MODULAR THROTTLE AND CHECK VALVE

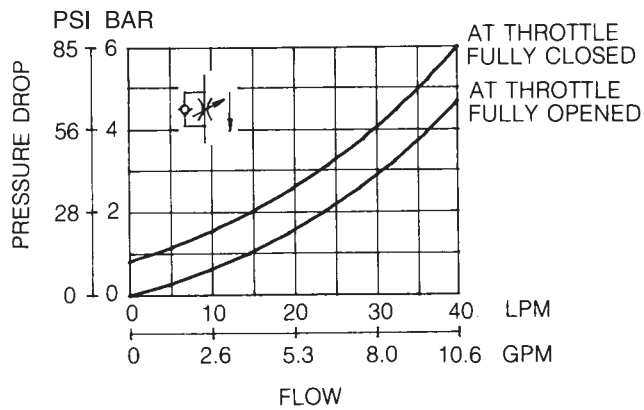
PERFORMANCE CURVES

TEST CONDITIONS

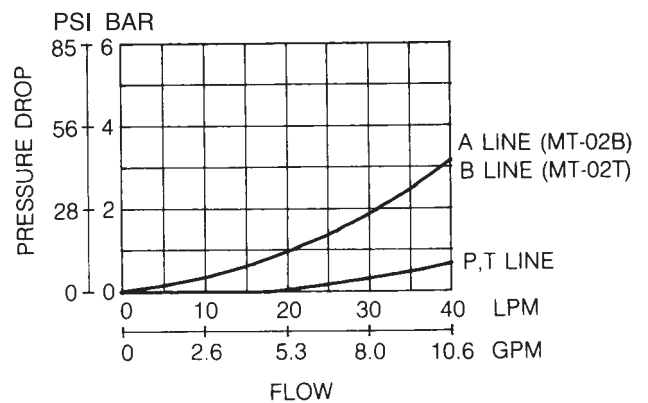
Viscosity: 35 cSt (175 SSU)

Temperature: 50°C (122°F)

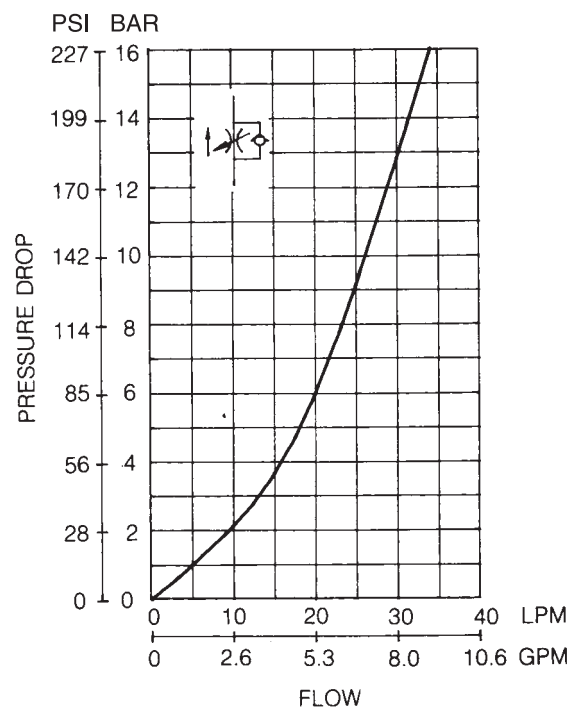
PRESSURE DROP FOR FREE FLOW



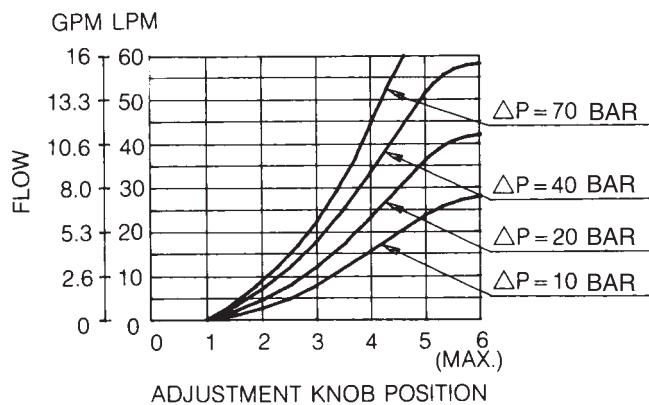
PRESSURE DROP



PRESSURE DROP AT THROTTLE FULLY OPENED



METERED FLOW VS. DIAL POSITION



MT-02 SERIES

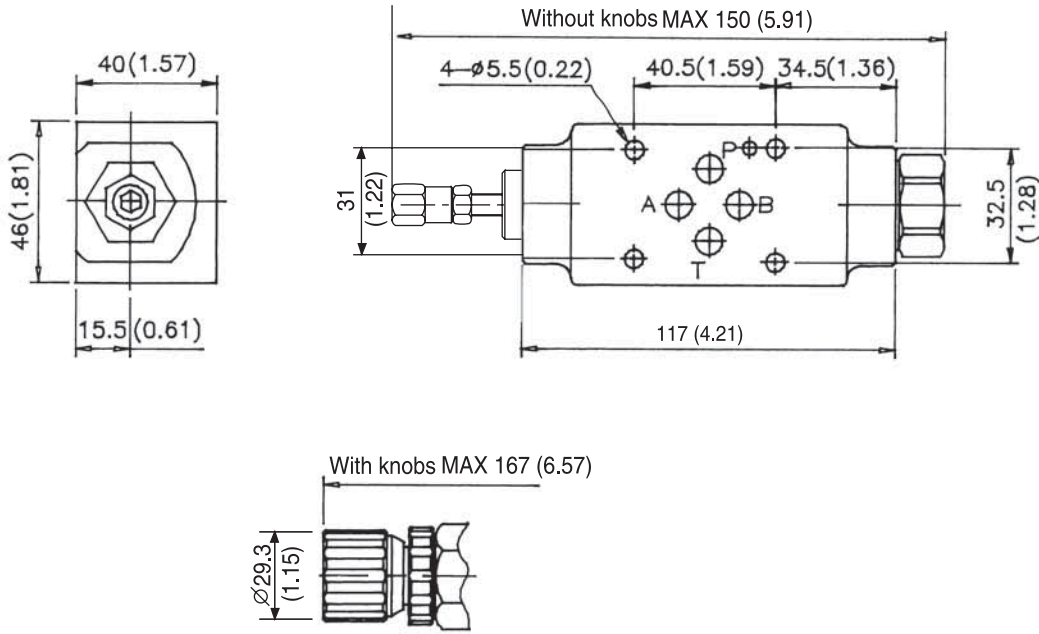
INSTALLATION DIMENSIONS

UNIT: mm(inch)

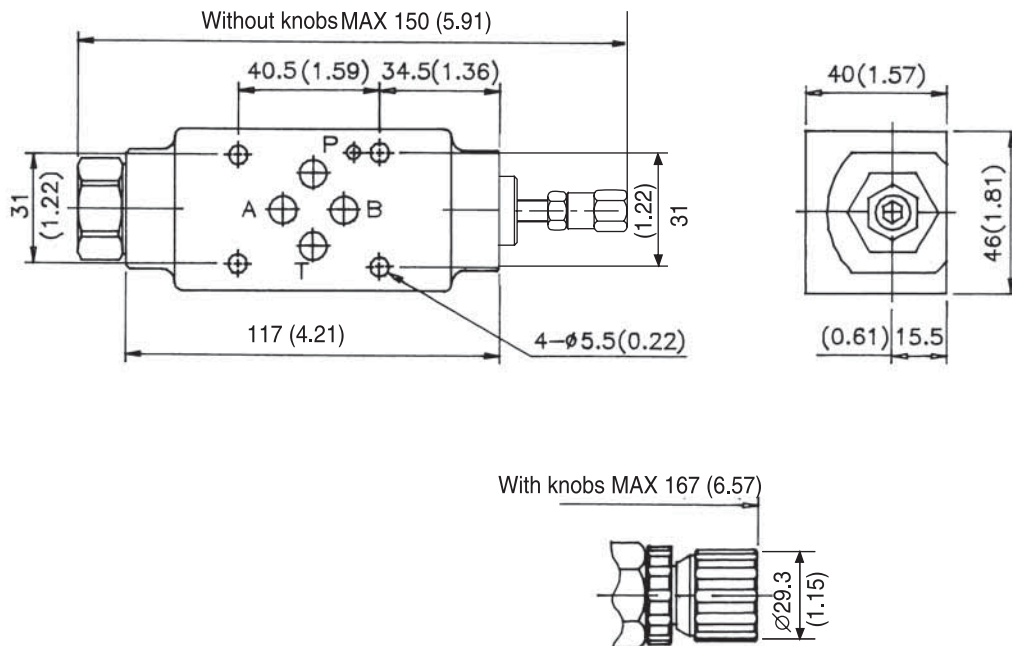
WEIGHT: 1.2 kgs(2.65 lbs)

Mounting Surface: ISO 4401-AB-03-4-A

MT - 02A - ※ - 40



MT - 02B - ※ - 40



INSTALLATION DIMENSIONS

UNIT: mm(inch)
 WEIGHT: 1.4 kgs(3.1 lbs)
 Mounting Surface: ISO 4401-AB-03-4-A

MT - 02W - ※ - ※ - 40

