

UPDATED NEW DATA TO MPC-02 SERIES

Northman's new MPC-02 series of Modular Pilot Check Valve is designed, tested and proven to be the best performing parts available on the market today.....

Two types of cracking pressure options are :

05 — 0.35 kgf/cm² (5 psi)

50 — 35 kgf/cm² (50 psi)

All prices of MPC-02 series are same as 2007.

Please see our new MPC-02 series catalog as attached.



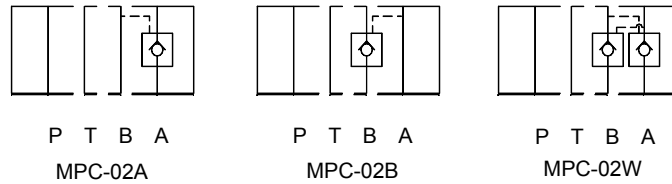
**NORTHMAN CO., LTD.
January 2008**

MODULAR PILOT CHECK VALVE

MPC-02 SERIES



SYMBOLS

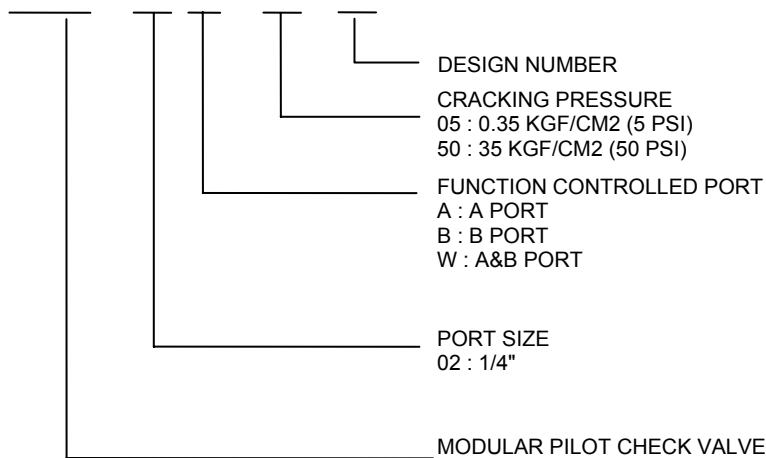


SPECIFICATIONS

MAX. OPERATING PRESSURE	210 kgf/cm ² (3000 PSI)
MAX. FLOW CAPACITY	35 LPM (9.3 GPM)

HOW TO ORDER

MPC - 02 W - 05 - 40

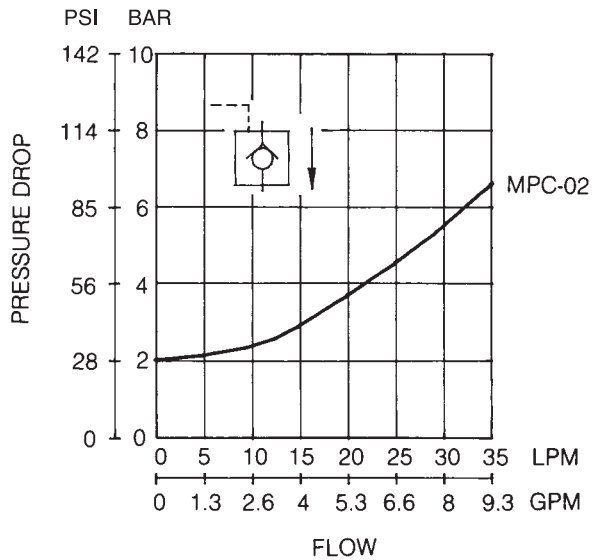


PERFORMANCE CURVES

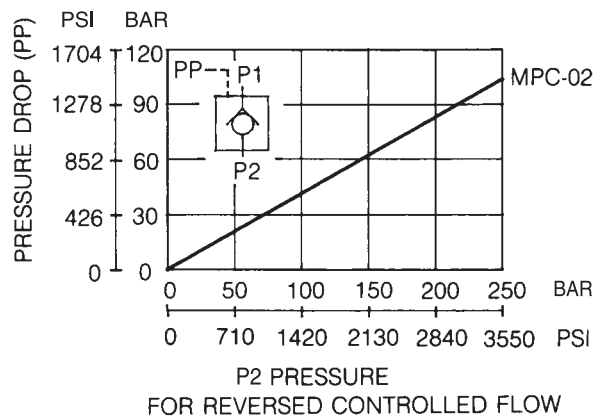
TEST CONDITIONS

Viscosity: 35 cSt (175 SSU)
 Temperature: 50°C (122° F)

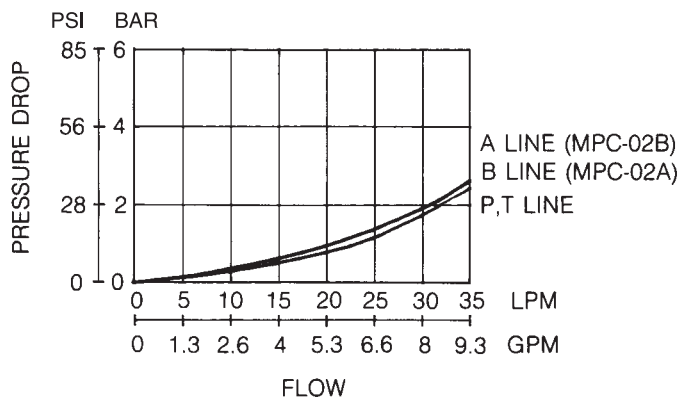
PRESSURE DROP FOR FREE FLOW



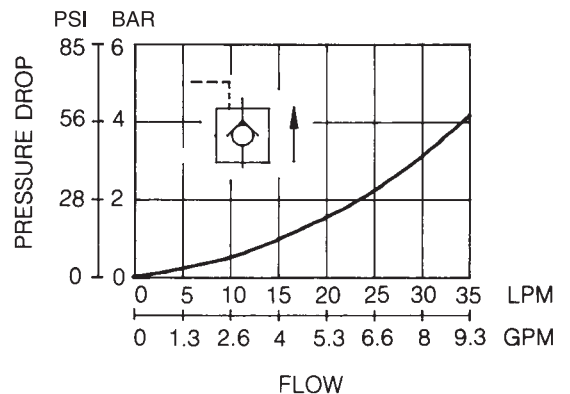
MIN. PILOT PRESSURE



PRESSURE DROP



PRESSURE DROP FOR REVERSE CONTROLLED FLOW



MPC-02 SERIES

INSTALLATION DIMENSIONS

UNIT: mm(inch)
WEIGHT:

MPC - 02 ※ - 40

