

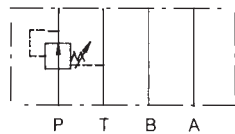
# MODULAR PRESSURE REDUCING VALVE MPR-03 SERIES



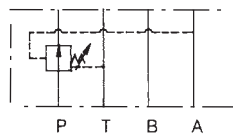
## SPECIFICATIONS

Max. operating pressure	207 BAR (3000 PSI)
Max. flow capacity	70 LPM (20 GPM)

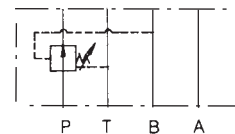
## SYMBOLS



MPR-03P



MPR-03A



MPR-03B

## HOW TO ORDER

**MPR-03P - K-0-40**

DESIGN NUMBER

PRESSURE ADJUSTMENT RANGE:

1 : 8-70BAR (120-1000PSI)

2 : 35-140BAR (500-2000PSI)

3 : 70-210BAR (1000-3000PSI)

ADJUSTMENT MODEL :

K : WITH KNOB

NO CODE : WITHOUT KNOB

FUNCTION PORT :

P : P PORT

A : A PORT

B : B PORT

PORT SIZE : 3/8" (D05)

MODULAR PRESSURE REDUCING VALVE

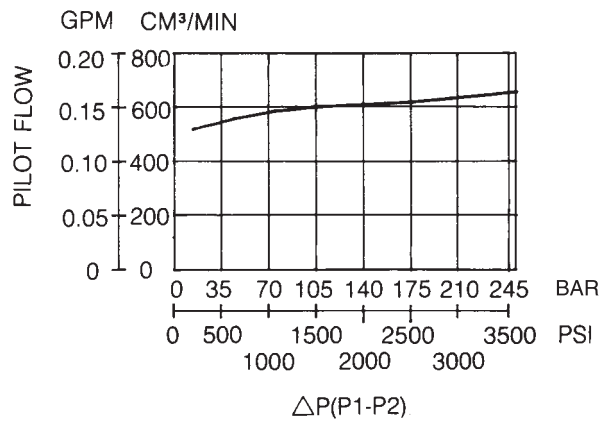
## PERFORMANCE CURVES

### TEST CONDITIONS

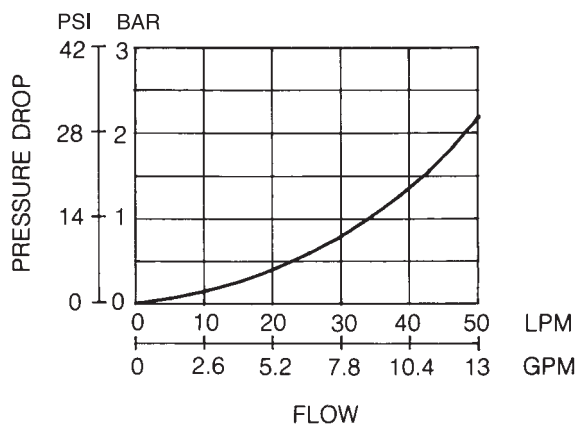
Viscosity: 35 cSt (175 SSU)

Temperature: 50°C (122° F)

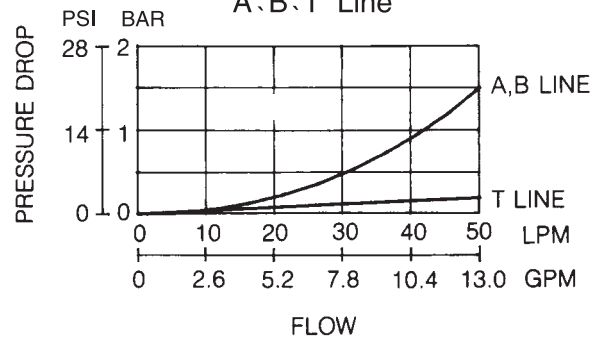
### PILOT FLOW CHART



### PRESSURE DROP AT SPOOL FULLY OPENED (P-LINE)



### PRESSURE DROP A, B, T Line



# MPR-03 SERIES

## INSTALLATION DIMENSIONS

UNIT: mm(inch)  
WEIGHT: 3.4 kgs(7.50 lbs)  
Mounting Surface: ISO 4401-AB-03-4-A

MPR - 03A/B/P - ※ - ※ - 40

