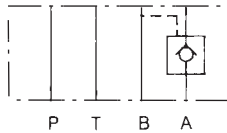


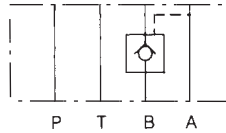
SPECIFICATIONS

Max. operating pressure	207 BAR (3000 PSI)
Max. flow capacity	70 LPM (20 GPM)

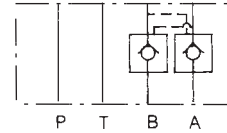
SYMBOLS



MPC-03A



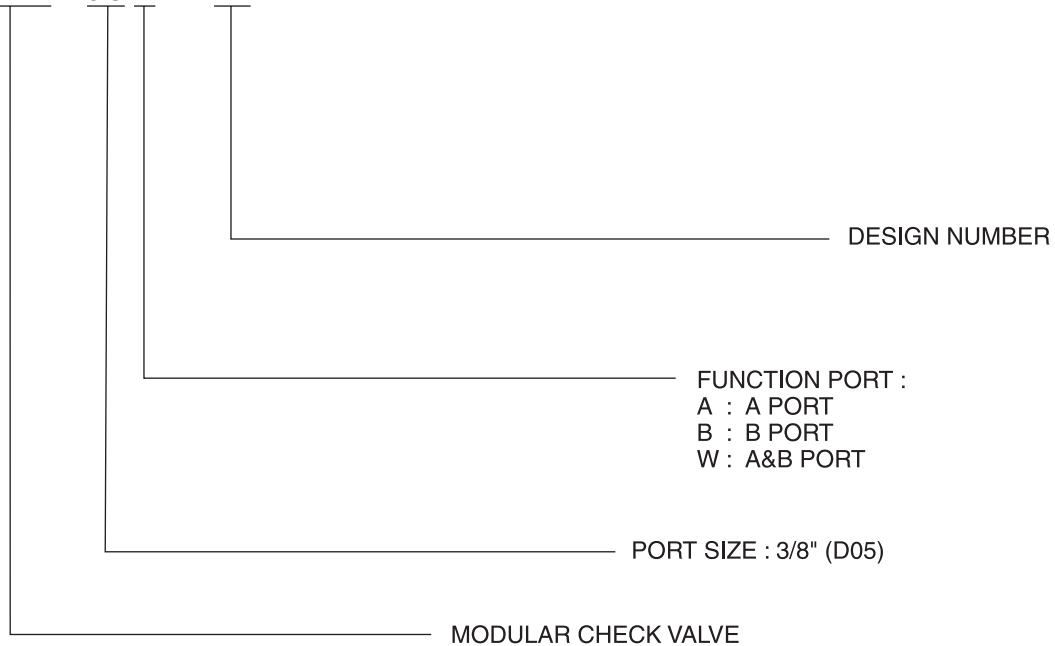
MPC-03B



MPC-03W

HOW TO ORDER

MPC - 03W - 40



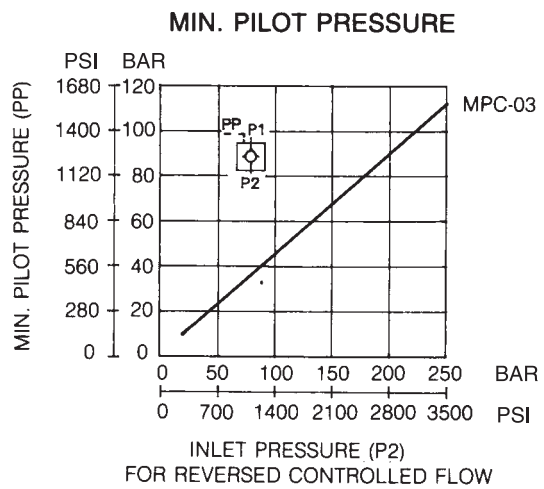
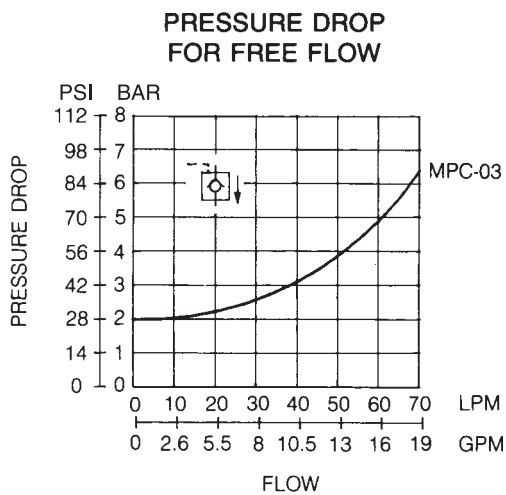
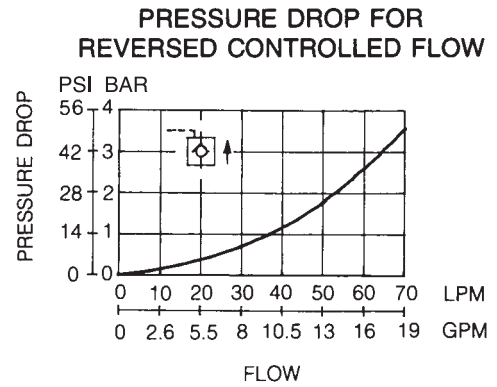
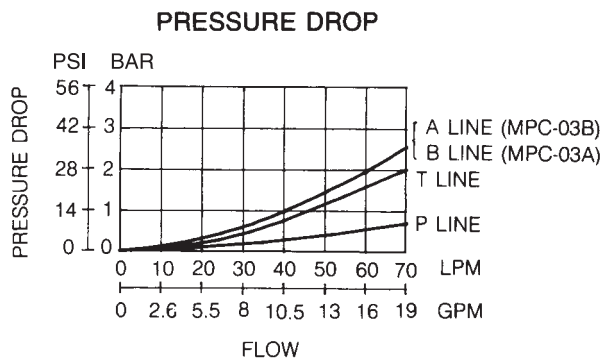
MPC-03 SERIES

PERFORMANCE CURVES

TEST CONDITIONS

Viscosity: 35 cSt (175 SSU)

Temperature: 50°C (122° F)



INSTALLATION DIMENSIONS

UNIT: mm(inch)
 WEIGHT: 3.4 kgs(7.5 lbs)
 Mounting Surface: ISO 4401-AB-03-4-A

MPC - 03 ※- 40

